



2018 Thistle Great Lakes Championships

Seneca Yacht Club
June 30 - July 1, 2018

Organizing Authority: Seneca Yacht Club, Geneva, NY 14561



SAILING INSTRUCTIONS

RRS – Racing Rules of Sailing NoR – Notice of Race SI – Sailing Instructions
RC – Race Committee PC – Protest Committee

1 RULES

- 1.1 The regatta will be governed by the *rules* as defined in the RRS. Appendix V – Alternative Penalties will apply.
- 1.2 The Thistle Class Rules as documented in the Thistle Class Constitution, TCA Bylaws, Chief Measurement Rulings and Specifications shall apply.

2 NOTICES TO COMPETITORS

- 2.1 Notices to competitors will be posted on the official notice board located at the front porch west side of clubhouse.
- 2.2 The race committee will use VHF Channel 78 to communicate with competitors.

3 CHANGES TO SAILING INSTRUCTIONS

Any change to the SIs will be posted before 0900 on the day it will take effect, except that any change in the schedule of races will be posted before 1900 on the day before it will take effect.

4 SIGNALS MADE ASHORE

- 4.1 Signals made ashore will be displayed from the flagpole on the pier, west of the clubhouse.
- 4.2 When Flag AP is displayed ashore, '1 minute' is replaced with 'not less than 45 minutes' in Race Signal AP. This changes Race Signals AP.

5 SCHEDULE OF RACES

Friday, June 29, 2018

Practice Races (optional clinic/informal racing)
1500 Clinic followed by announced First warning signal

Saturday, June 30, 2018

1000 First warning signal

Sunday, July 1, 2018

0930 First warning signal
1400 No warning signal after 1400

6 CLASS FLAGS

The Class Flag will be the Thistle Class logo on a white background.

7 RACING AREA

The racing area will be west southwest of the Seneca Yacht Club, as shown in Attachment B.

8 THE COURSES

- 8.1 The diagrams and descriptions in Attachment A define the courses, including the approximate angles between legs, the order in which marks are to be passed, and the side on which each mark is to be left.
- 8.2 No later than the warning signal the RC signal vessel will display the course designation and approximate compass bearing of the first leg on a white board.

9 MARKS

- 9.1 The starting mark will be an orange flag.
- 9.2 The finishing mark will be either an orange cylinder inflatable (upwind finish) or orange flag (downwind finish).
- 9.2 The windward, leeward, and reach marks will be orange inflatable cylinders. The windward-offset will be a red ball.
- 9.3 New marks, as provided in SI 11, will be yellow inflatables.
- 9.4 If only one gate mark is in place, it shall be rounded to port.

10 THE START

- 10.1 The starting line will be between a staff displaying an orange flag on the RC signal vessel and a staff displaying an orange flag on a RC vessel on the course side of the port-end of the starting line.
- 10.2 A boat that does not start within 5 minutes after her starting signal will be scored Did Not Start (DNS) without a hearing. This changes RRS 63.1, A4 and A5.
- 10.3 When an individual recall is signaled, the RC will attempt to hail boats that are OCS. The timing and order, or omission, of such hails or the failure of a boat to hear a hail will not be considered an improper action or omission of the RC under RRS 62.1.

11 CHANGE OF THE NEXT LEG OF THE COURSE

To change the next leg, the race committee will lay (a) new mark, (b) move the finishing line or (c) move the gate. When a new mark is laid, the original mark will be removed as soon as practicable. When in a subsequent change a new mark is replaced, it will be replaced by an original mark.

2018 Thistle Great Lakes Championship Sailing Instructions



12 THE FINISH

- 12.1 The finishing line will be between a staff displaying an orange flag on a RC vessel and the course side of the finishing mark.
- 12.2 Flag A (Alpha) displayed (with no sound) from the finish vessel while boats are finishing means no more racing today.

13 THE PENALTY SYSTEM

Appendix V – Alternative Penalties will apply.

14 TIME LIMIT

- 14.1 The time limit for the first boat to sail the course and finish is 1.5 hours.
- 14.2 Boats failing to finish within 30 minutes after the first boat sails the course and finishes will be scored Did Not Finish (DNF) without a hearing. This changes RRS 35, 63.1, A4 and A5.

15 PROTESTS AND REQUESTS FOR REDRESS

- 15.1 Protest forms are available in the Regatta Room. Protests and requests for redress or reopening shall be delivered there within the appropriate time limit.
- 15.2 Flag B (Bravo) with a sound will be hoisted at the flagpole indicating the start of the protest time, and removed with a sound when ended. This time will be posted.
- 15.3 Notices will be posted no later than 30 minutes after the protest time limit to inform competitors of hearings in which they are parties or named as witnesses. Hearings will be held at a designated picnic table south of the club, beginning as soon as practical.
- 15.4 Notices of protests by the RC or PC will be posted to inform boats under RRS 61.1(b).
- 15.5 Within the protest time limit, the RC will post the sail numbers of all boats that are penalized under RRS 29 and 30. A boat so notified may only file a request for redress within 60 minutes of the posting time. This changes RRS 62.2
- 15.6 On the last scheduled day of racing a request for redress or reopening based on a PC decision shall be delivered no later than 30 minutes after the decision was posted. This changes RRS 62.2 and 66.
- 15.7 A lesser penalty than DSQ, (which may include no penalty) may be given at the discretion of the PC for an infringement of rules other than the rule of RRS Part 2 When Boats Meet. This changes RRS 64.1

16 SCORING

- 16.1 A minimum of one race must be completed to constitute a regatta.
- 16.2 A boat's series score will be the total of her race scores.
- 16.3 A maximum of nine (9) races are scheduled.

17 SAFETY REGULATIONS

- 17.1 Boats are requested to check in with the RC prior to the warning signal of the first race each day by sailing on starboard tack past the stern of the signal vessel and hailing her sail number until acknowledged by the RC.
- 17.2 A competitor that retires from a race or intends not to start a race shall inform the nearest safety or RC vessel as soon as possible.

18 REPLACEMENT OF CREW OR EQUIPMENT

Substitution of competitors will not be allowed without the prior written approval of the RC. Per TCS Bylaw IX 9 (a) two or more active members may alternate as skipper on a race-by-race basis.

19 OUTSIDE HELP WHILE NOT RACING

The preamble to RRS Part 4 Other Requirements When Racing is changed to add the following:

While *not racing*, from the time a boat leaves the dock until she has returned to shore, a boat shall not receive help from any outside source, except:

- a. Help for a crewmember who is ill, injured, or in danger;
- b. After a collision, help from the crew of the other vessel to get clear;
- c. Help in the form of information or sustenance freely available to all boats;
- d. Unsolicited information from a disinterested source.

20 RADIO COMMUNICATION

- 20.1 Pursuant to Chief Measurer's Rulings 65 and 74, competitors may receive VHF radio transmissions from the RC on VHF channel 78 concerning safety, notice of on-course-side (OCS) boats and general information to assist in the management of the event.
- 20.2 The RC will monitor VHF channel 78 for use in emergency and safety related situations.

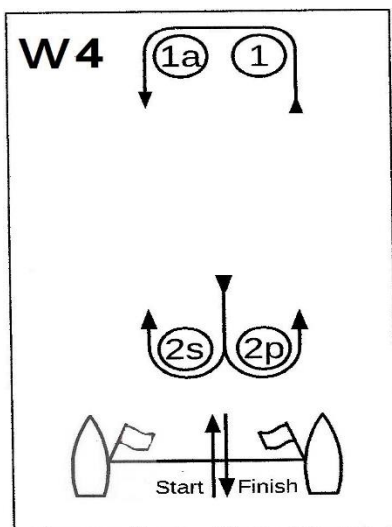
22 PRIZES

Prizes will be given to the top five teams.

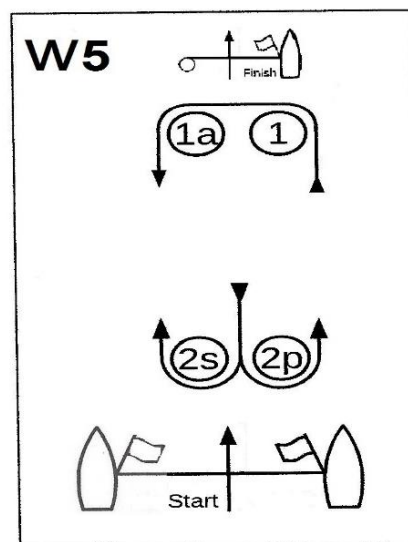
23 DISCLAIMER OF LIABILITY

Competitors participate in the regatta entirely at their own risk. See RRS 4 Decision to Race. The organizing authority will not accept any liability for material damage or personal injury or death sustained in conjunction with or prior to, during, or after the regatta.

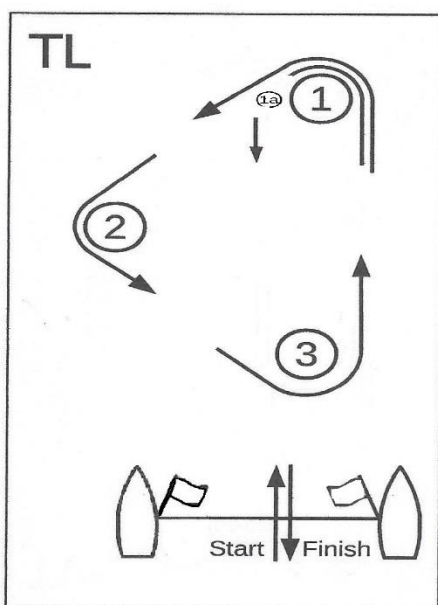
Attachment A – Course Diagrams



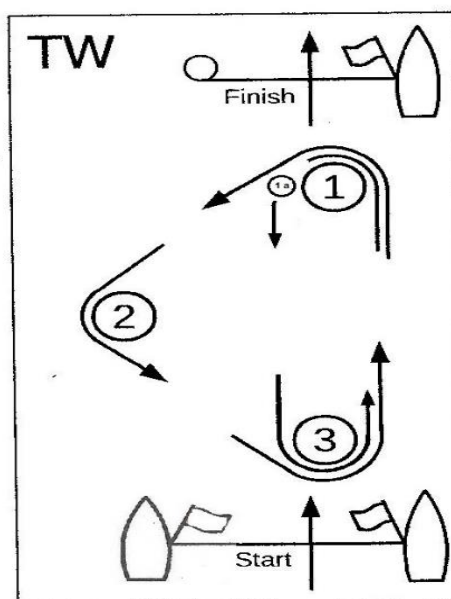
COURSE W4	
Signal	Mark Rounding Order
W4	Start – 1 – 1a – 2s or 2p – 1 – 1a – Finish



COURSE W5	
Signal	Mark Rounding Order
W5	Start – 1 – 1a – 2s or 2p – 1 – 1a – 2s or 2p – Finish



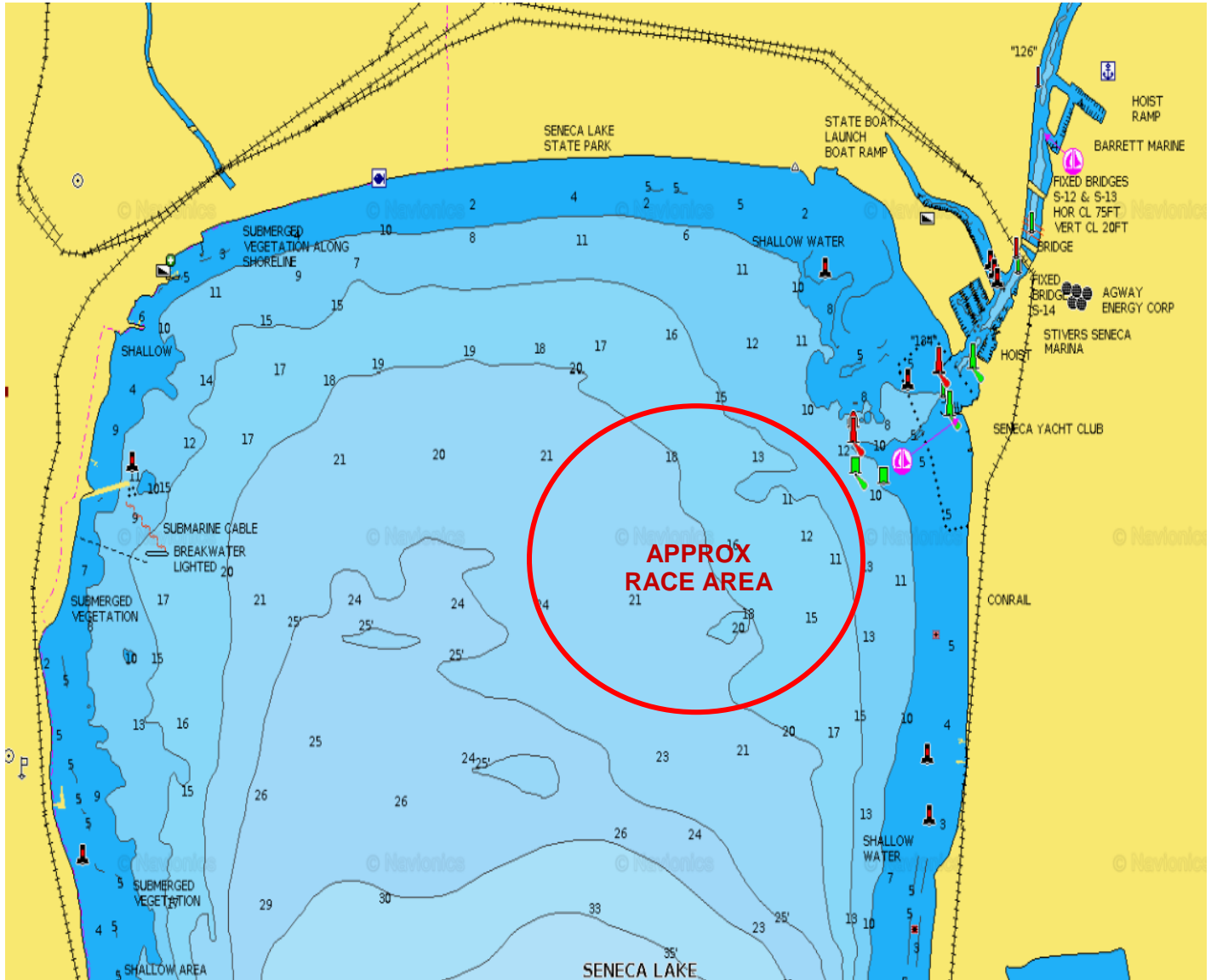
COURSE TL	
Signal	Mark Rounding Order
TL	Start – 1 – 2 – 3 – 1 – 1a – Finish



COURSE TW	
Signal	Mark Rounding Order
TL	Start – 1 – 2 – 3 – 1 – 1a – 3 – Finish

2018 Thistle Great Lakes Championship Sailing Instructions

Attachment B – Approximate Racing Area



2018 Thistle Great Lakes Championship Sailing Instructions

